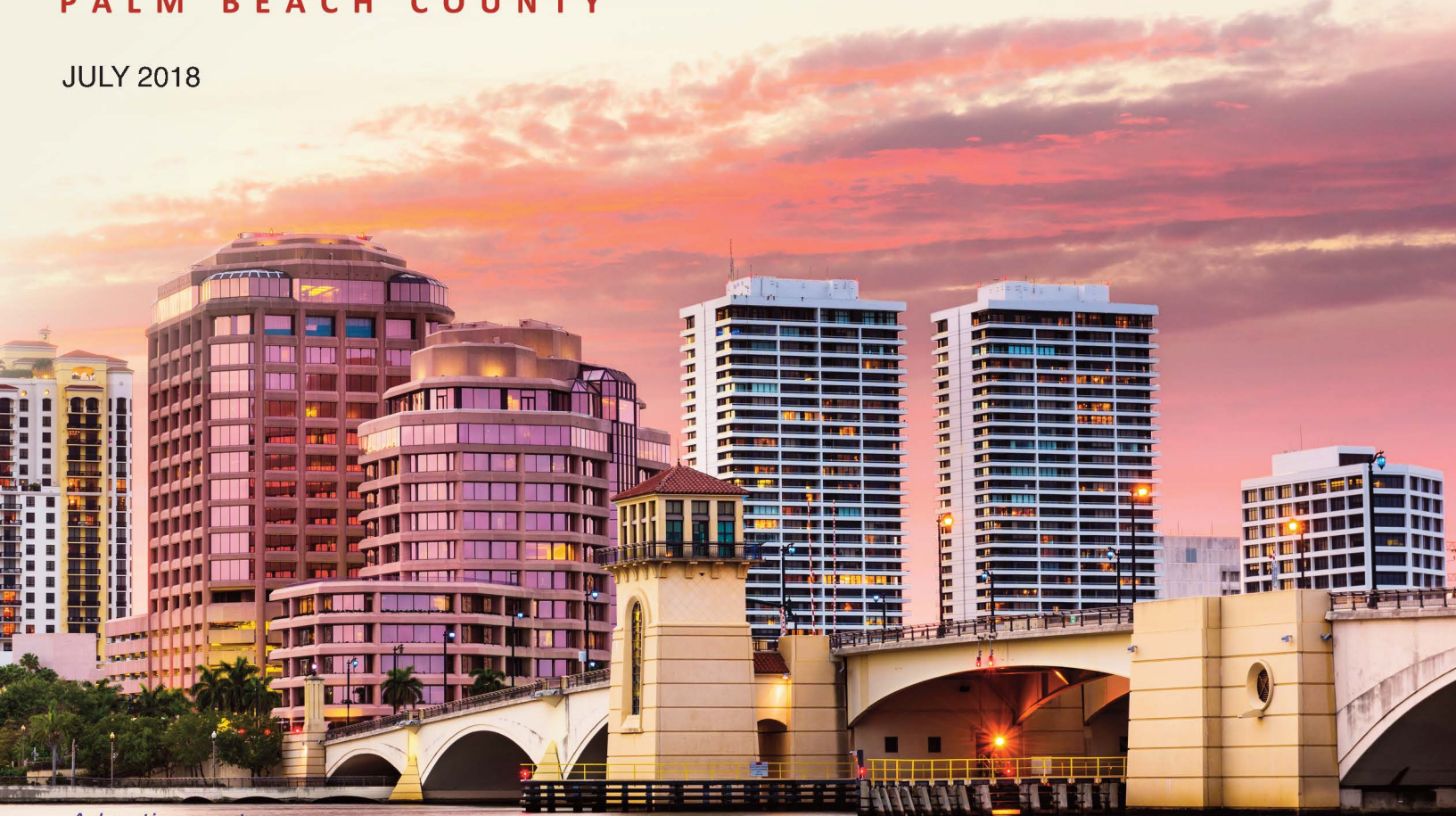


RABIDEAU LAW BRIEF

MILLION DOLLAR MORTGAGES PALM BEACH COUNTY

JULY 2018



Advertisement

\$1 MILLION-PLUS HIGHLIGHT

Commercial Mortgages Yo-yo During 2nd Quarter Down 70% In April — Up 52% In May — Down 59% In June

The total value of \$1M-plus Commercial Mortgage Loans awarded in Palm Beach County during the second quarter of 2018 swung up and down each month as compared to its previous month; a decrease of 70% in April, an increase of 52% in May, and a decrease of 59% in June. U.S. Real Estate Credit Holdings III A LP provided the largest Commercial Mortgage in June, a \$61 million loan to Banyan Cay Resort & Golf LLC. The largest Residential Mortgage went to Massimo Musa on his property at 2325 S. Ocean Boulevard. The \$9.7 million loan mortgagee was Wells Fargo Bank, NA. The total value of \$1M-plus Commercial Mortgage Loans awarded in Palm Beach County for the last 12 months was \$7.79 billion as compared to \$4.15 billion for the previous 12 months, an increase of 88%.

© 2018 Rabideau Law. All rights reserved.

INFORMATION DEEMED RELIABLE BUT NOT GUARANTEED.

RABIDEAU LAW

PALM BEACH | TORONTO

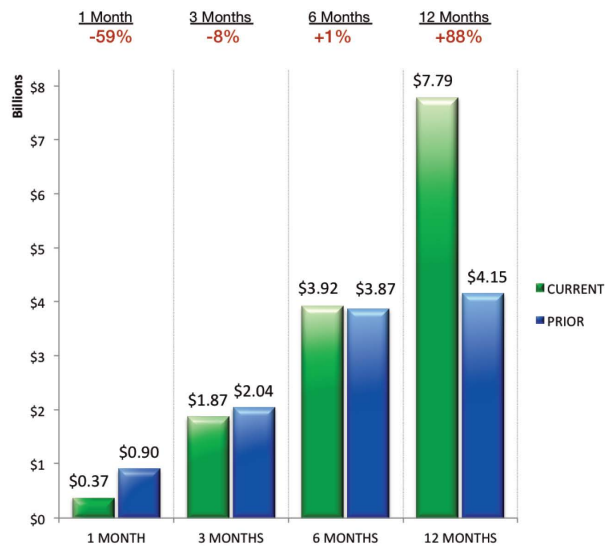
COMMERCIAL MORTGAGES

TOP 5 COMMERCIAL LOANS – JUNE

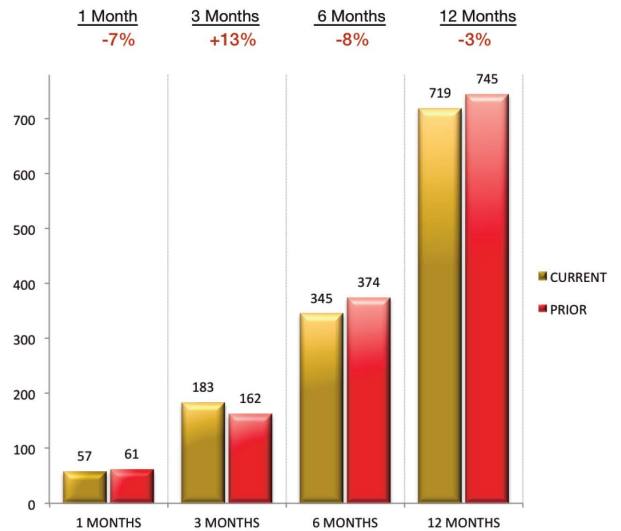
LENDER	AMOUNT	BORROWER
US Real Estate Credit Holdings III A LP	\$61.0 M	Banyan Cay Resort & Golf LLC
Berkadia Commercial Mortgage LLC	\$29.8 M	Verona At Boynton Beach LLC
BankUnited NA	\$28.6 M	1501 Yamato Road LLC
Trez Capital 2018 Nominee LP	\$20.6 M	Sofa I, LLLP
Santander Bank NA	\$19.0 M	Coal Lake Worth LLC

\$1 MILLION-PLUS COMMERCIAL MORTGAGES

VALUE OF LOANS*
CURRENT VS PRIOR



NUMBER OF LOANS*
CURRENT VS PRIOR



TOP 10 LENDERS*		CURRENT 3 MONTHS		PRIOR 3 MONTHS	
COMMERCIAL MORTGAGE LOANS		LOANS	VALUE	LOANS	VALUE
1.	<i>Bank of America NA</i>	8	\$141.2 M	5	\$51.7 M
2.	<i>JPMorgan Chase Bank NA</i>	8	\$45.1 M	4	\$25.9 M
3.	<i>Centennial Bank</i>	8	\$24.9 M	0	\$0.0 M
4.	<i>Wells Fargo Bank NA</i>	7	\$49.3 M	6	\$49.3 M
5.	<i>First Republic Bank</i>	7	\$44.0 M	3	\$6.2 M
6.	<i>Florida Community Bank NA</i>	6	\$72.3 M	4	\$35.0 M
7.	<i>Branch Banking & Trust Company</i>	5	\$28.3 M	1	\$13.6 M
8.	<i>Paradise Bank</i>	5	\$16.7 M	2	\$4.2 M
9.	<i>BankUnited NA</i>	4	\$36.7 M	1	\$15.0 M
10.	<i>Seacoast National Bank</i>	4	\$15.4 M	3	\$8.6 M

	CURRENT 6 MONTHS		PRIOR 6 MONTHS		CURRENT 12 MONTHS		PRIOR 12 MONTHS	
	LOANS	VALUE	LOANS	VALUE	LOANS	VALUE	LOANS	VALUE
1)	13	\$192.9 M	18	\$160.1 M	31	\$353.0 M	39	\$252.9 M
2)	12	\$71.0 M	10	\$70.8 M	22	\$141.8 M	34	\$389.7 M
3)	8	\$24.9 M	3	\$10.4 M	11	\$35.3 M	3	\$40.0 M
4)	13	\$98.6 M	20	\$330.4 M	33	\$429.0 M	28	\$154.0 M
5)	10	\$50.2 M	11	\$50.7 M	21	\$100.9 M	13	\$25.0 M
6)	10	\$107.3 M	10	\$129.9 M	20	\$273.2 M	18	\$146.8 M
7)	6	\$41.9 M	8	\$69.4 M	14	\$111.3 M	20	\$163.2 M
8)	7	\$20.9 M	5	\$14.6 M	12	\$35.5 M	11	\$22.0 M
9)	5	\$51.7 M	4	\$27.3 M	9	\$79.0 M	9	\$28.3 M
10)	7	\$24.1 M	5	\$7.9 M	12	\$32.0 M	23	\$55.8 M

*For most commercial loans awarded in Palm Beach County during the last three months

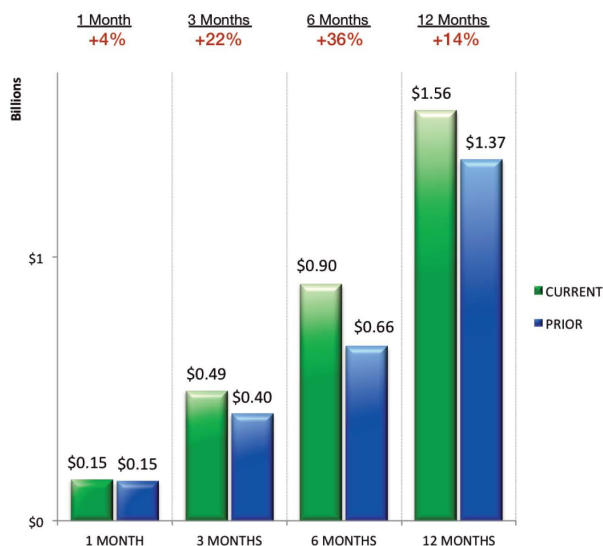
RESIDENTIAL MORTGAGES

TOP 5 RESIDENTIAL LOANS – JUNE

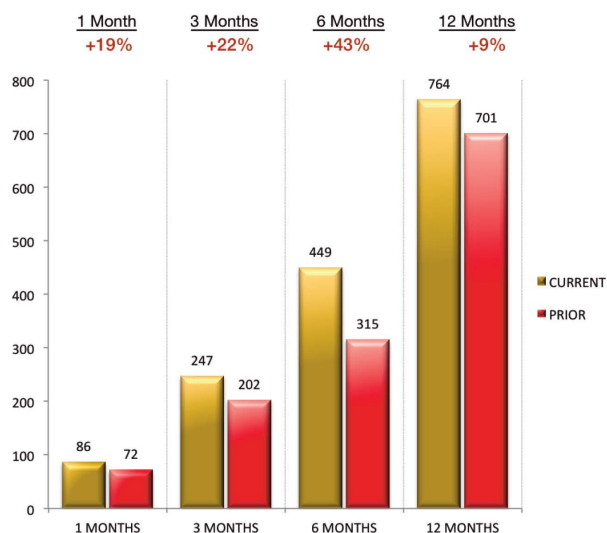
LENDER	AMOUNT	BORROWER
Wells Fargo Bank NA	\$9.7 M	Massimo Musa
Levinson Jordan Mitchell	\$6.8 M	Bryan Lipscomb
City National Bank	\$4.6 M	Paul H. Saunders
Huntington National Bank	\$4.5 M	James E. McGuire, Jr.
PNC Bank NA	\$3.5 M	Rabih J. Boueri

\$1 MILLION-PLUS RESIDENTIAL MORTGAGES

VALUE OF LOANS*
CURRENT VS PRIOR



NUMBER OF LOANS*
CURRENT VS PRIOR



TOP 10 LENDERS*

	RESIDENTIAL MORTGAGE LOANS	CURRENT 3 MONTHS		PRIOR 3 MONTHS	
		LOANS	VALUE	LOANS	VALUE
1.	Bank of America NA	31	\$55.4 M	20	41.9 M
2.	JPMorgan Chase Bank NA	20	\$73.4 M	18	\$45.8 M
3.	Wells Fargo Bank NA	19	\$40.8 M	14	\$22.5 M
4.	First Republic Bank	13	\$18.6 M	10	\$21.2 M
5.	IberiaBank	11	\$19.7 M	5	\$10.8 M
6.	Morgan Stanley Private Bank NA	7	\$9.5 M	4	\$4.5 M
7.	UBS Bank USA	5	\$10.2 M	2	\$5.1 M
8.	Citibank NA	5	\$10.0 M	7	\$22.2 M
9.	City National Bank of Florida	4	\$9.5 M	2	\$4.6 M
10.	PNC Bank NA	4	\$7.2 M	0	\$0.0 M

	CURRENT 6 MONTHS		PRIOR 6 MONTHS		CURRENT 12 MONTHS		PRIOR 12 MONTHS	
	LOANS	VALUE	LOANS	VALUE	LOANS	VALUE	LOANS	VALUE
1)	51	\$97.3 M	39	\$84.6 M	90	\$181.9 M	79	\$139.1 M
2)	38	\$119.1 M	20	\$44.9 M	58	\$164.1 M	69	\$163.8 M
3)	33	\$63.3 M	26	\$48.6 M	59	\$112.0 M	73	\$139.4 M
4)	23	\$39.7 M	17	\$37.3 M	40	\$77.1 M	34	\$77.7 M
5)	16	\$30.5 M	11	\$17.4 M	27	\$47.9 M	4	\$7.6 M
6)	11	\$14.0 M	14	\$22.6 M	25	\$36.6 M	38	\$64.8 M
7)	7	\$15.2 M	6	\$30.9 M	13	\$46.1 M	21	\$64.4 M
8)	12	\$32.2 M	10	\$19.0 M	22	\$51.2 M	16	\$24.6 M
9)	6	\$14.1 M	1	\$1.5 M	7	\$15.6 M	6	\$18.4 M
10)	4	\$7.2 M	2	\$54.6 M	6	\$61.8 M	2	\$2.7 M

*For most residential loans awarded in Palm Beach County during the last three months

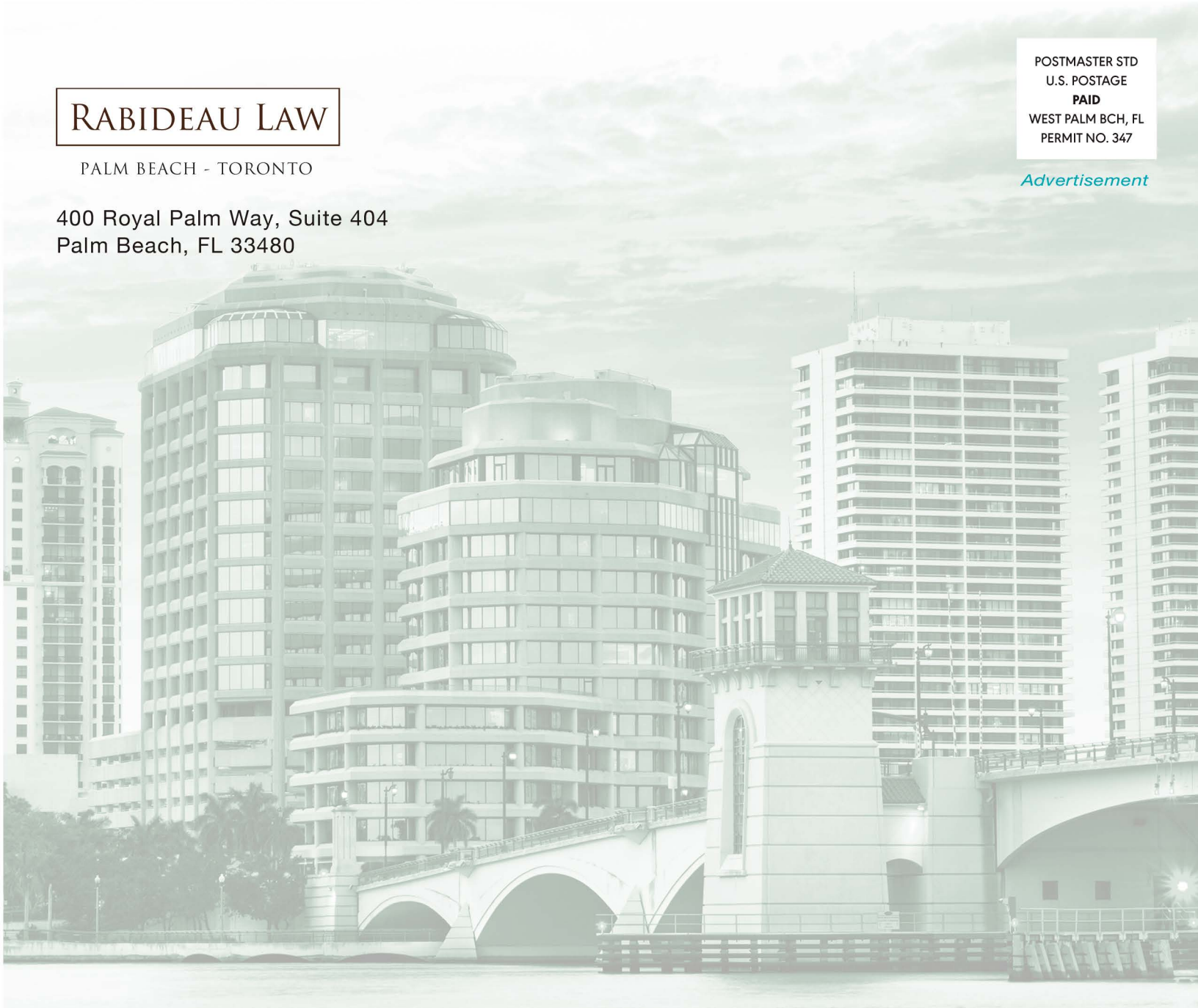
RABIDEAU LAW

PALM BEACH - TORONTO

400 Royal Palm Way, Suite 404
Palm Beach, FL 33480

POSTMASTER STD
U.S. POSTAGE
PAID
WEST PALM BCH, FL
PERMIT NO. 347

Advertisement



Rabideau Law is a trusted representative of high-end real estate, business formation, cross-border and legal consultation. Our law firm has been in existence since 2014 and consists of three attorneys dedicated to providing superior legal counsel and first-class service to our clientele.

Our legal team offers decades of knowledge and experience on all legal matters for successful real estate transactions and related issues. We provide representation for all of your real estate assets, such as single-family homes, condominiums, co-ops, vacant land, investment, and commercial properties.

ONLINE RESOURCES

Beach Access: www.rabideau-law.com/beach-access/

Rabideau Law Million Dollar Mortgage Brief - Palm Beach County: www.rabideau-law.com/million-dollar-mortgage-brief/

CONTACTS

David E. Klein, Esq. | dklein@rabideau-law.com | 561.655.6221

Guy Rabideau, Esq. | grabideau@rabideau-law.com | 561.655.6221