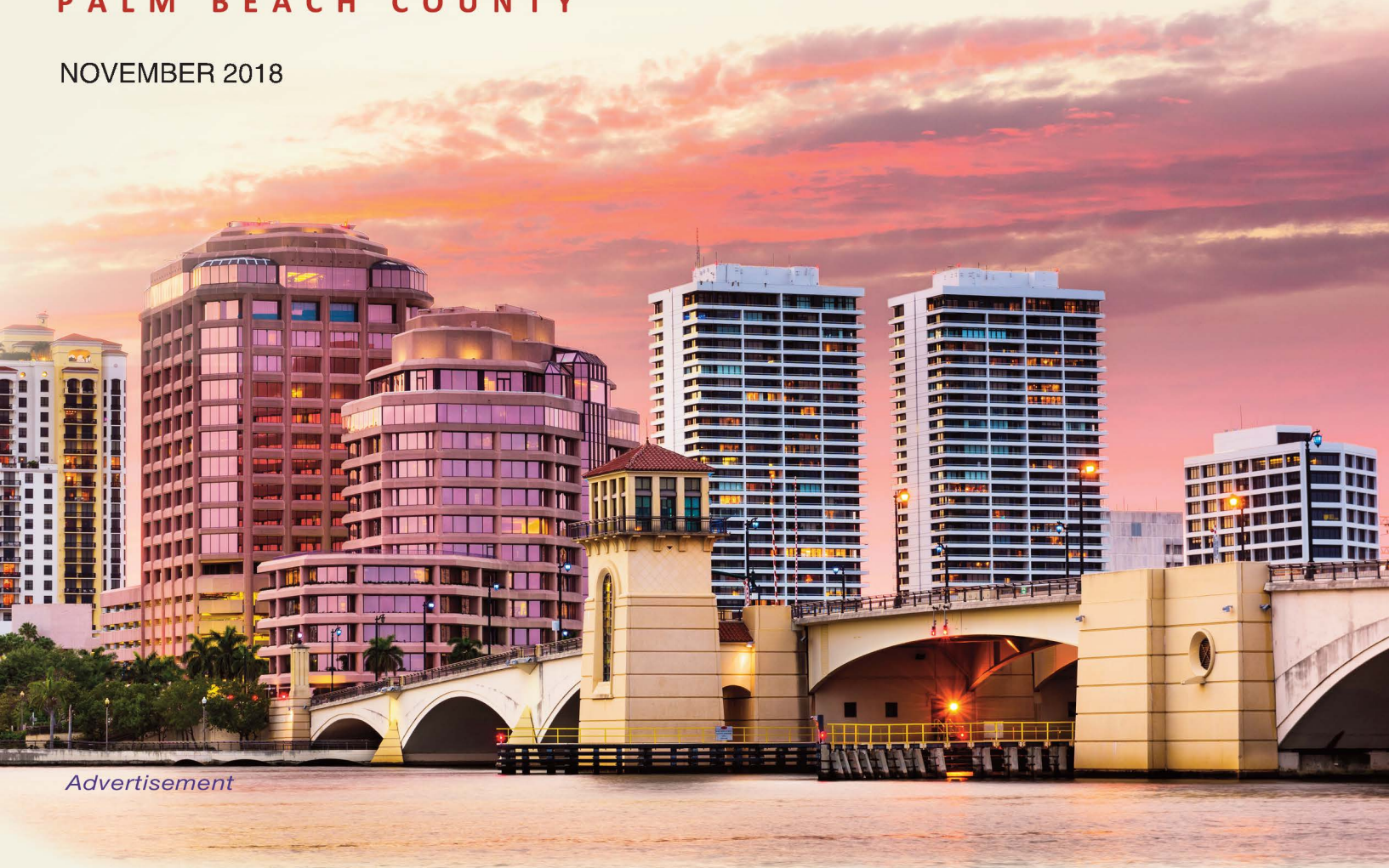


# RABIDEAU LAW BRIEF

MILLION DOLLAR MORTGAGES  
PALM BEACH COUNTY

NOVEMBER 2018



Advertisement

## \$1 MILLION-PLUS HIGHLIGHT

### Cityplace Secures \$102M Mortgage From MetLife Real Estate Lending

**Residential \$1M-plus Monthly Total Continues To Hover Around \$100 Million**

MetLife Real Estate Lending, LLC granted CPT Equity, LLC and White & Case, LLP a \$101.75 million mortgage on 87,911 square-feet of office space, the lobby and support space of Cityplace Tower South in West Palm Beach. The transaction infused commercial loan investment revenue in Palm Beach County contributing to a 51% increase in \$1 million-plus commercial loan money in October as compared to September, and helped to maintain a positive year-long increase, which is currently at 53%. The monthly residential \$1 million-plus mortgage total continues to hover around the \$100 million mark, with October at \$97.5 million. The largest residential mortgage in October went to Joseph A. Lashinger, a \$5.94 million loan secured on 12227 Tillinghast Circle in Palm Beach Gardens, in favor of Goldman Sachs Bank USA.

© 2018 Rabideau Law. All rights reserved.

INFORMATION DEEMED RELIABLE BUT NOT GUARANTEED.

RABIDEAU LAW

PALM BEACH | TORONTO

REAL ESTATE | LAND USE | FINANCE | CROSS BORDER | BUSINESS FORMATION

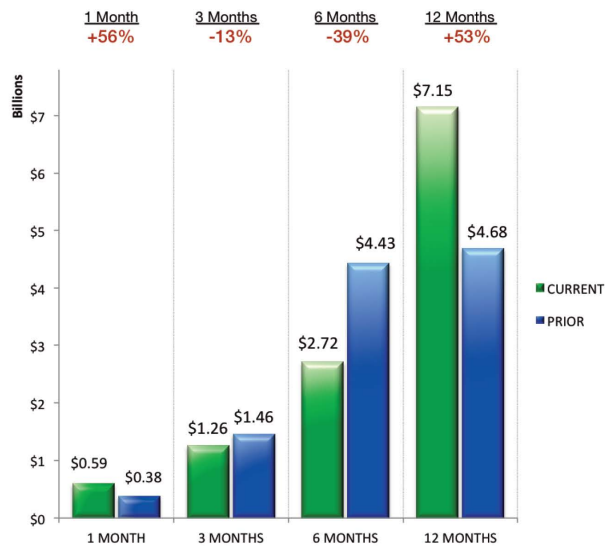
# COMMERCIAL MORTGAGES

## TOP 5 COMMERCIAL LOANS — OCTOBER

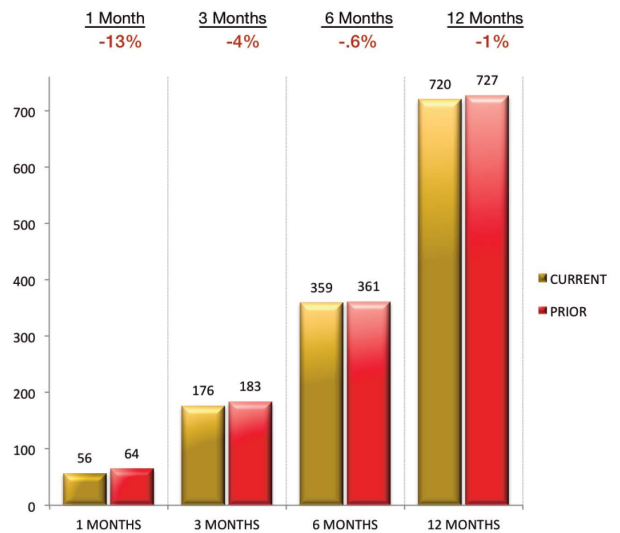
LENDER	AMOUNT	BORROWER
MetLife Real Estate Lending, LLC	\$101.8 M	CPT Equity, LLC
United Bank	\$70.0 M	Brando Woody De, LLC
Wells Fargo Bank National Association	\$37.2 M	Meadowbrook WPB MHC, LLC
GVAA, LLC	\$25.0 M	Oakland Apartment Investments, LLC & 12 other LLCs
ACRC Lender, LLC	\$22.0 M	Wright By The Sea 1901, LLC

## \$1 MILLION-PLUS COMMERCIAL MORTGAGES

VALUE OF LOANS\*  
CURRENT VS PRIOR



NUMBER OF LOANS\*  
CURRENT VS PRIOR



### TOP 10 LENDERS\*

	COMMERCIAL MORTGAGE LOANS	CURRENT 3 MONTHS		PRIOR 3 MONTHS	
		LOANS	VALUE	LOANS	VALUE
1.	JPMorgan Chase Bank NA	9	\$48.6 M	8	\$35.7 M
2.	Wells Fargo Bank National Association	5	\$57.6 M	2	\$0.0 M
3.	IberiaBank	5	\$28.1 M	2	\$7.0 M
4.	Berkadia Commercial Mortgage, LLC	5	\$117.9 M	5	\$58.0 M
5.	Branch Banking & Trust Company	5	\$21.1 M	4	\$10.7 M
6.	Valley National Bank	5	\$14.9 M	0	\$1.9 M
7.	US Bank National Association	4	\$64.8 M	0	\$0.0 M
8.	Bank of America NA	4	\$24.5 M	8	\$16.6 M
9.	Florida Community Bank NA	4	\$22.2 M	6	\$58.9 M
10.	LendingOne, LLC	4	\$19.2 M	8	\$0.0 M

	CURRENT 6 MONTHS		PRIOR 6 MONTHS		CURRENT 12 MONTHS		PRIOR 12 MONTHS	
	LOANS	VALUE	LOANS	VALUE	LOANS	VALUE	LOANS	VALUE
1)	17	\$35.7 M	7	\$42.4 M	24	\$124.8 M	28	\$260.2 M
2)	7	\$0.0 M	3	\$0.0 M	10	\$57.6 M	2	\$0.0 M
3)	7	\$7.0 M	10	\$12.0 M	17	\$47.1 M	28	\$33.4 M
4)	10	\$58.0 M	7	\$43.7 M	17	\$219.6 M	17	\$110.4 M
5)	9	\$10.7 M	4	\$99.3 M	13	\$131.0 M	5	\$130.7 M
6)	5	\$1.9 M	6	\$33.9 M	11	\$50.7 M	4	\$37.4 M
7)	4	\$0.0 M	0	\$0.0 M	4	\$64.8 M	0	\$0.0 M
8)	12	\$16.6 M	14	\$309.6 M	26	\$350.7 M	35	\$155.7 M
9)	10	\$58.9 M	13	\$144.5 M	23	\$225.6 M	16	\$176.2 M
10)	12	\$0.0 M	3	\$5.8 M	15	\$25.1 M	3	\$1.4 M

\*For most commercial loans awarded in Palm Beach County during the last three months



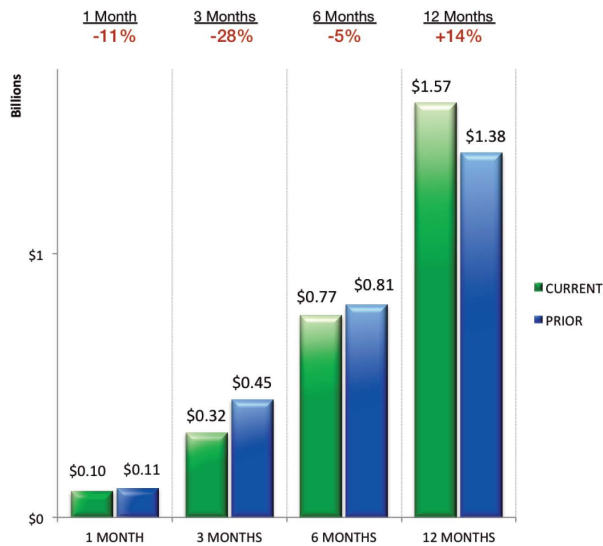
# RESIDENTIAL MORTGAGES

## TOP 5 RESIDENTIAL LOANS – OCTOBER

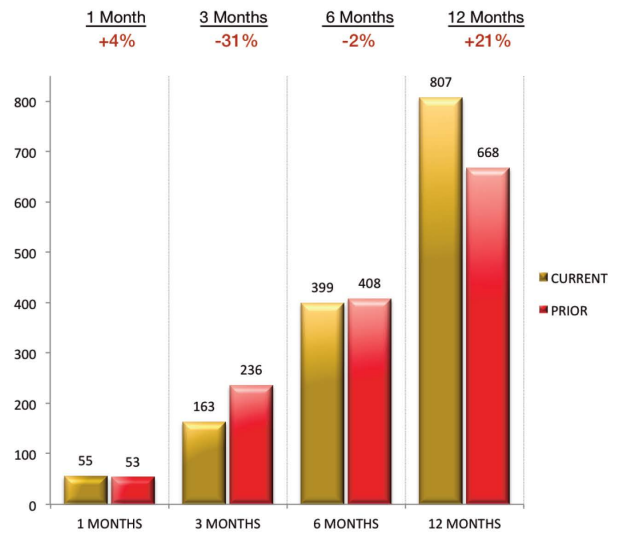
LENDER	AMOUNT	BORROWER
Goldman Sachs Bank USA	\$5.9 M	Joseph A. Lashinger
Bernard L Madoff Investment Securities, LLC	\$5.6 M	Edith A. Schur
Wayne Garrison Revocable Trust	\$4.5 M	Pamela P. Garrison
Bank Of America NA	\$4.2 M	Jason Brown
New Penn Financial, LLC	\$3.0 M	Francisco E. Jimenez

## \$1 MILLION-PLUS RESIDENTIAL MORTGAGES

VALUE OF LOANS\*  
CURRENT VS PRIOR



NUMBER OF LOANS\*  
CURRENT VS PRIOR



TOP 10 LENDERS*		CURRENT 3 MONTHS		PRIOR 3 MONTHS	
RESIDENTIAL MORTGAGE LOANS		LOANS	VALUE	LOANS	VALUE
1.	JPMorgan Chase Bank NA	17	\$47.8 M	17	\$40.2 M
2.	Bank of America NA	13	\$27.7 M	27	\$48.9 M
3.	Wells Fargo Bank NA	6	\$13.2 M	18	\$38.9 M
4.	First Republic Bank	6	\$10.5 M	10	\$13.9 M
5.	TD Bank NA	6	\$7.5 M	3	\$4.4 M
6.	Suntrust Bank	5	\$7.4 M	1	\$1.0 M
7.	IberiaBank	4	\$13.1 M	10	\$19.8 M
8.	Citibank NA	4	\$9.2 M	4	\$5.6 M
9.	UBS Bank USA	4	\$7.7 M	4	\$8.4 M
10.	Branch Banking & Trust Company	4	\$6.5 M	3	\$3.4 M

	CURRENT 6 MONTHS		PRIOR 6 MONTHS		CURRENT 12 MONTHS		PRIOR 12 MONTHS	
	LOANS	VALUE	LOANS	VALUE	LOANS	VALUE	LOANS	VALUE
1)	34	\$88.0 M	33	\$108.8 M	67	\$196.8 M	58	\$143.6 M
2)	40	\$76.7 M	44	\$89.8 M	84	\$166.5 M	83	\$155.2 M
3)	24	\$52.1 M	27	\$46.4 M	51	\$98.5 M	64	\$113.0 M
4)	16	\$24.2 M	23	\$39.3 M	39	\$63.5 M	36	\$87.0 M
5)	9	\$11.8 M	13	\$19.9 M	22	\$31.7 M	20	\$34.2 M
6)	6	\$8.4 M	1	\$1.6 M	7	\$10.0 M	1	\$1.5 M
7)	14	\$32.9 M	15	\$25.7 M	29	\$58.6 M	11	\$19.4 M
8)	8	\$14.7 M	11	\$30.2 M	19	\$44.9 M	17	\$28.7 M
9)	8	\$16.1 M	5	\$11.9 M	13	\$28.0 M	18	\$65.6 M
10)	7	\$9.9 M	6	\$8.4 M	13	\$18.2 M	11	\$28.7 M

\*For most residential loans awarded in Palm Beach County during the last three months

# RABIDEAU LAW

PALM BEACH - TORONTO

400 Royal Palm Way, Suite 404  
Palm Beach, FL 33480

POSTMASTER STD  
U.S. POSTAGE  
**PAID**  
WEST PALM BCH, FL  
PERMIT NO. 347

*Advertisement*



Rabideau Law is a trusted representative of high-end real estate, business formation, cross-border and legal consultation. Our law firm has been in existence since 2014 and consists of three attorneys dedicated to providing superior legal counsel and first-class service to our clientele.

Our legal team offers decades of knowledge and experience on all legal matters for successful real estate transactions and related issues. We provide representation for all of your real estate assets, such as single-family homes, condominiums, co-ops, vacant land, investment, and commercial properties.

## ONLINE RESOURCES

Beach Access: [www.rabideau-law.com/beach-access/](http://www.rabideau-law.com/beach-access/)

Rabideau Law Million Dollar Mortgage Brief - Palm Beach County: [www.rabideau-law.com/million-dollar-mortgage-brief/](http://www.rabideau-law.com/million-dollar-mortgage-brief/)

## CONTACTS

David E. Klein, Esq. | [dklein@rabideau-law.com](mailto:dklein@rabideau-law.com) | 561.655.6221

Florida Bar Board Certified in Real Estate Law

Guy Rabideau, Esq. | [grabideau@rabideau-law.com](mailto:grabideau@rabideau-law.com) | 561.655.6221

Florida Bar Board Certified in Real Estate Law