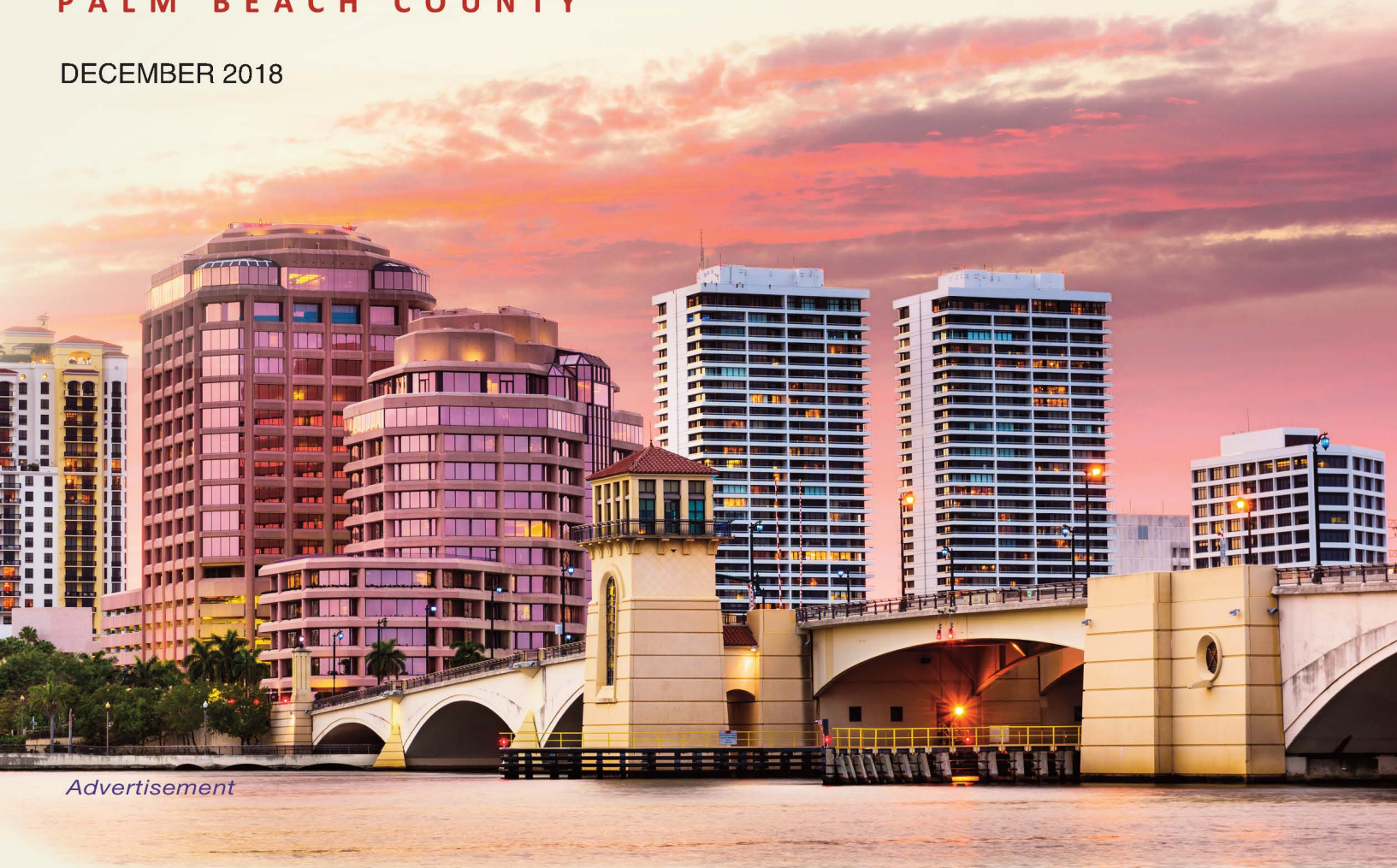


RABIDEAU LAW BRIEF

MILLION DOLLAR MORTGAGES
PALM BEACH COUNTY

DECEMBER 2018



Advertisement

\$1 MILLION-PLUS HIGHLIGHT

\$89.8M For Lake Worth Senior Housing

Lantana Rental Development Receives \$52.2M

The largest November commercial real estate mortgage was lent to Bishop Lake Worth Owner LLC, whose registered agent is Corporation Service Company in Tallahassee, Florida. The mortgage, secured on the Willow Bend property, a.k.a., The Brookdale At Lake Worth and The Embark At Lake Worth in favor of Keybank National Association, was for \$89.78 million. The second largest mortgage of \$52.20 million went to Lantana I Owner, LLC in favor of Regions Bank secured on Water Tower Commons, a Lantana rental development with a completion date of 2020. In November residential mortgages in the \$1 million-plus category increased 83% as compared to October with the largest loan made by JPMorgan Chase Bank NA, a \$40 million mortgage secured on 13 Ocean Vista properties in Palm Beach, borrowed by SydeLL L. Miller.

© 2018 Rabideau Law. All rights reserved.

INFORMATION DEEMED RELIABLE BUT NOT GUARANTEED.

RABIDEAU LAW

PALM BEACH | TORONTO

REAL ESTATE | LAND USE | FINANCE | CROSS BORDER | BUSINESS FORMATION

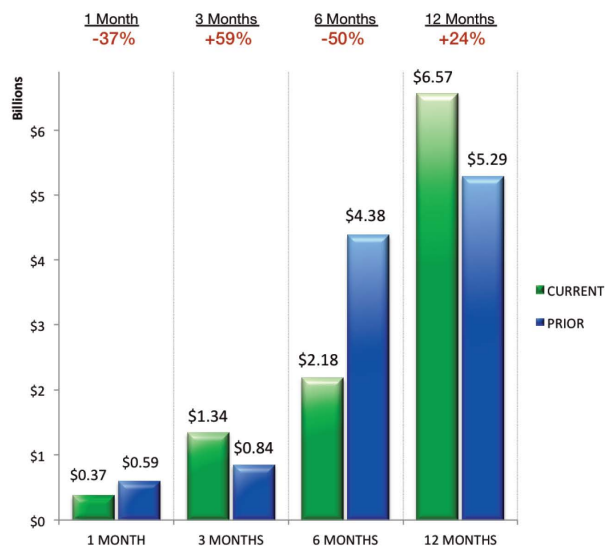
COMMERCIAL MORTGAGES

TOP 5 COMMERCIAL LOANS — NOVEMBER

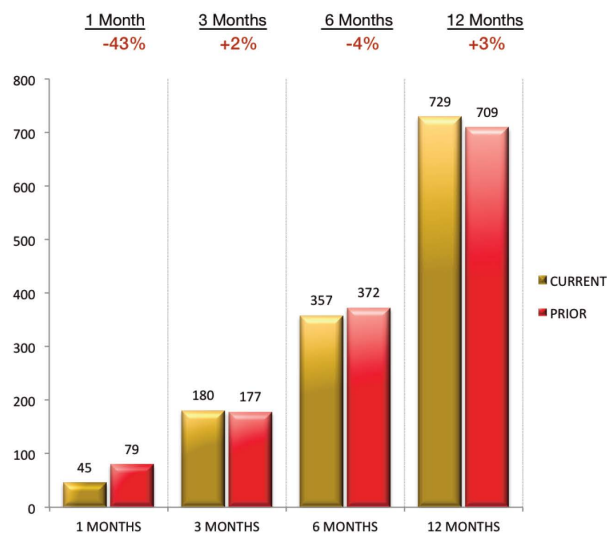
LENDER	AMOUNT	BORROWER
Keybank National Association	\$89.8 M	Bishop Lake Worth Owner, LLC
Regions Bank	\$52.2 M	Lantana I Owner, LLC
Kref Capital, LLC	\$38.2 M	WPB Multifamily Owner I & II, LLCs
Keybank National Association	\$28.0 M	Alchemy ABR BCP Broken Sound 1, LLC
BankUnited NA	\$15.9 M	Bishop Lake Worth Owner, LLC

\$1 MILLION-PLUS COMMERCIAL MORTGAGES

VALUE OF LOANS*
CURRENT VS PRIOR



NUMBER OF LOANS*
CURRENT VS PRIOR



TOP 10 LENDERS*

COMMERCIAL MORTGAGE LOANS		CURRENT 3 MONTHS		PRIOR 3 MONTHS	
		LOANS	VALUE	LOANS	VALUE
1.	<i>Wells Fargo Bank National Association</i>	9	\$63.8 M	0	\$0.0 M
2.	<i>LendingOne, LLC</i>	7	\$45.1 M	0	\$0.0 M
3.	<i>IberiaBank</i>	6	\$28.3 M	3	\$8.3 M
4.	<i>JPMorgan Chase Bank NA</i>	5	\$25.2 M	8	\$45.5 M
5.	<i>Valley National Bank</i>	5	\$14.4 M	2	\$4.5 M
6.	<i>US Bank National Association</i>	4	\$64.8 M	0	\$0.0 M
7.	<i>Bank of America NA</i>	4	\$26.9 M	6	\$19.0 M
8.	<i>BankUnited NA</i>	4	\$19.6 M	8	\$45.9 M
9.	<i>City National Bank of Florida</i>	4	\$14.7 M	6	\$22.3 M
10.	<i>Branch Banking & Trust Company</i>	4	\$13.6 M	4	\$15.4 M

	CURRENT 6 MONTHS		PRIOR 6 MONTHS		CURRENT 12 MONTHS		PRIOR 12 MONTHS	
	LOANS	VALUE	LOANS	VALUE	LOANS	VALUE	LOANS	VALUE
1)	9	\$63.8 M	0	\$0.0 M	9	\$63.8 M	0	\$0.0 M
2)	7	\$41.5 M	3	\$4.8 M	10	\$50.0 M	2	\$2.4 M
3)	9	\$36.6 M	1	\$3.0 M	10	\$39.6 M	9	\$42.4 M
4)	13	\$70.7 M	12	\$54.1 M	25	\$124.8 M	24	\$252.9 M
5)	7	\$18.9 M	11	\$35.8 M	18	\$54.7 M	11	\$32.5 M
6)	4	\$64.8 M	0	\$0.0 M	4	\$64.8 M	0	\$0.0 M
7)	10	\$45.9 M	13	\$273.6 M	23	\$319.6 M	37	\$188.0 M
8)	12	\$65.5 M	3	\$21.8 M	15	\$87.3 M	6	\$36.7 M
9)	10	\$37.0 M	10	\$47.2 M	20	\$84.1 M	21	\$68.8 M
10)	8	\$29.0 M	10	\$103.9 M	18	\$132.8 M	15	\$129.2 M

*For most commercial loans awarded in Palm Beach County during the last three months

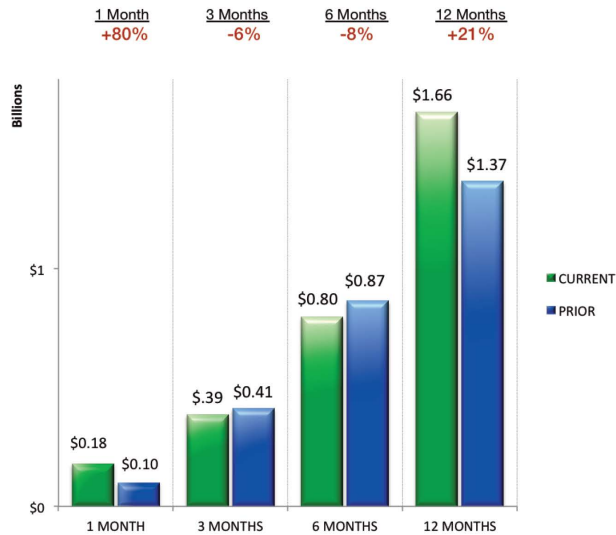
RESIDENTIAL MORTGAGES

TOP 5 RESIDENTIAL LOANS — NOVEMBER

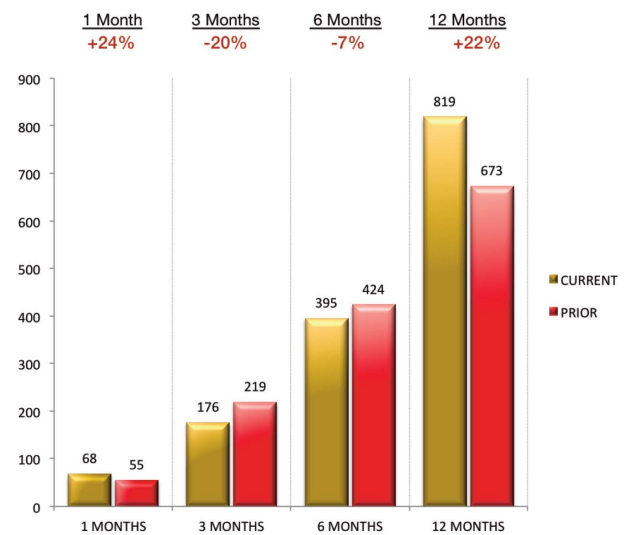
LENDER	AMOUNT	BORROWER
JPMorgan Chase Bank NA	\$40.0 M	Sydell L. Miller
RECOVCO Mortgage Management, LLC	\$5.7 M	Holcombe T. Green
Mortgage Bank of California	\$5.7 M	Justin Daniels
Bank Of America NA	\$5.4 M	Todd Glaser
First Republic Bank	\$5.1 M	Joseph A. Lanasa

\$1 MILLION-PLUS RESIDENTIAL MORTGAGES

VALUE OF LOANS*
CURRENT VS PRIOR



NUMBER OF LOANS*
CURRENT VS PRIOR



TOP 10 LENDERS*		CURRENT 3 MONTHS		PRIOR 3 MONTHS	
RESIDENTIAL MORTGAGE LOANS		LOANS	VALUE	LOANS	VALUE
1.	Bank of America NA	18	\$41.5 M	23	\$41.5 M
2.	First Republic Bank	11	\$22.5 M	6	\$9.1 M
3.	JPMorgan Chase Bank NA	10	\$54.1 M	20	\$52.8 M
4.	Wells Fargo Bank NA	10	\$16.5 M	14	\$36.6 M
5.	UBS Bank USA	7	\$14.0 M	2	\$4.3 M
6.	IberiaBank	5	\$13.2 M	9	\$19.1 M
7.	TD Bank NA	5	\$5.9 M	5	\$6.9 M
8.	Citibank NA	4	\$8.6 M	4	\$6.4 M
9.	Goldman Sachs Bank USA	3	\$10.6 M	1	\$2.5 M
10.	PNC Bank NA	3	\$7.8 M	4	\$7.9 M

	CURRENT 6 MONTHS		PRIOR 6 MONTHS		CURRENT 12 MONTHS		PRIOR 12 MONTHS	
	LOANS	VALUE	LOANS	VALUE	LOANS	VALUE	LOANS	VALUE
1)	41	\$83.0 M	45	\$92.4 M	86	\$175.3 M	78	\$147.2 M
2)	17	\$31.5 M	27	\$44.3 M	44	\$75.8 M	34	\$83.2 M
3)	30	\$106.9 M	36	\$127.0 M	66	\$233.9 M	54	\$136.7 M
4)	24	\$53.1 M	28	\$44.5 M	52	\$97.6 M	67	\$117.5 M
5)	9	\$18.3 M	6	\$14.2 M	15	\$32.5 M	16	\$57.8 M
6)	14	\$32.3 M	15	\$27.9 M	29	\$60.2 M	14	\$23.9 M
7)	10	\$12.8 M	11	\$17.1 M	21	\$30.0 M	21	\$35.7 M
8)	8	\$15.0 M	12	\$31.2 M	20	\$46.2 M	16	\$27.7 M
9)	4	\$13.1 M	3	\$8.0 M	7	\$21.2 M	7	\$14.5 M
10)	7	\$15.7 M	4	\$4.9 M	11	\$20.6 M	2	\$54.9 M

*For most residential loans awarded in Palm Beach County during the last three months

RABIDEAU LAW

PALM BEACH - TORONTO

400 Royal Palm Way, Suite 404
Palm Beach, FL 33480

POSTMASTER STD
U.S. POSTAGE
PAID
WEST PALM BCH, FL
PERMIT NO. 347

Advertisement



Rabideau Law is a trusted representative of high-end real estate, business formation, cross-border and legal consultation. Our law firm has been in existence since 2014 and consists of three attorneys dedicated to providing superior legal counsel and first-class service to our clientele.

Our legal team offers decades of knowledge and experience on all legal matters for successful real estate transactions and related issues. We provide representation for all of your real estate assets, such as single-family homes, condominiums, co-ops, vacant land, investment, and commercial properties.

ONLINE RESOURCES

Beach Access: www.rabideau-law.com/beach-access/

Rabideau Law Million Dollar Mortgage Brief - Palm Beach County: www.rabideau-law.com/million-dollar-mortgage-brief/

CONTACTS

David E. Klein, Esq. | dklein@rabideau-law.com | 561.655.6221

Florida Bar Board Certified in Real Estate Law

Guy Rabideau, Esq. | grabideau@rabideau-law.com | 561.655.6221

Florida Bar Board Certified in Real Estate Law