

RABIDEAU LAW BRIEF

MILLION DOLLAR MORTGAGES
PALM BEACH COUNTY

DECEMBER 2019



Advertisement

\$1 MILLION-PLUS HIGHLIGHT

Far Niente Stable LLC's Procure \$77.7M For Equestrian Expansion

Four Far Niente Stables LLC's, whose registered agent is part-owner of the International Polo Club, Wellington developer Mark Bellissimo, just procured a \$77.67 million mortgage secured on fourteen parcels totaling about 26 acres next to the Palm Beach International Equestrian Center. The lender was Motcomb Estates LTD, United Kingdom. November's second largest commercial mortgage loan went to Royal Palm Place Investments LLC for \$58 million in favor of Argentic Real Estate secured on a portion of the Royal Palm Plaza located in Boca Raton. The largest residential mortgage loan of November went to Alex Chesterman in favor of Suntrust Bank for six lots located in the Via Vizcaya Addition in the Town of Palm Beach.

Advertisement

© 2019 Rabideau Law. All rights reserved.

INFORMATION DEEMED RELIABLE BUT NOT GUARANTEED.

RABIDEAU LAW

PALM BEACH | TORONTO

REAL ESTATE | LAND USE | FINANCE | CROSS BORDER | BUSINESS FORMATION

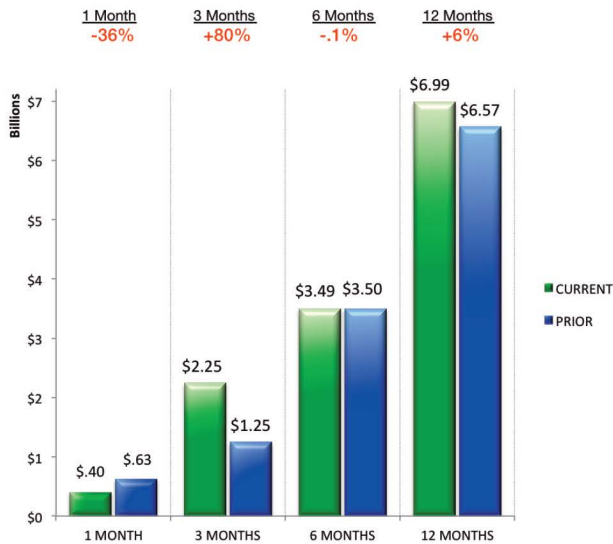
COMMERCIAL MORTGAGES

TOP 5 COMMERCIAL LOANS — NOVEMBER

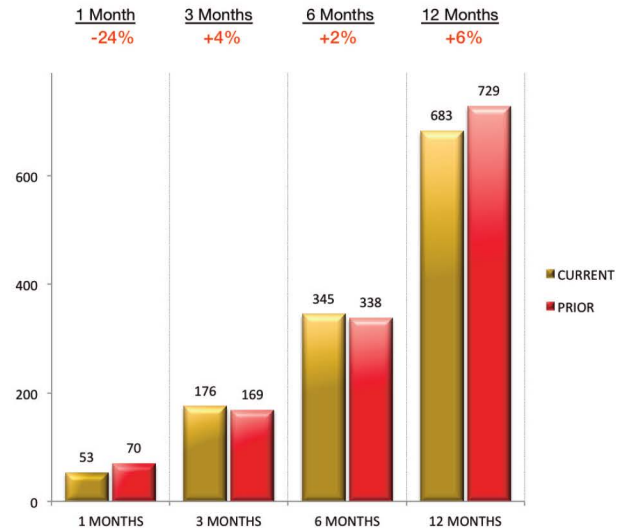
LENDER	AMOUNT	BORROWER
Motcomb Estates LTD	\$77.7 M	Far Niente Stables III, IV, XXV, XXVI & VII LLC's
Argentica Real Estate Finance LLC	\$58.0 M	Royal Palm Place Investments LLC
Synovus Bank	\$39.0 M	AHC Of West Palm Beach LLC
Acore Capital Mortgage LP	\$22.5 M	Ambassador Hotel PB LLC
Bank Of America NA	\$19.5 M	Crab Orchard LLC

\$1 MILLION-PLUS COMMERCIAL MORTGAGES

VALUE OF LOANS*
CURRENT VS PRIOR



NUMBER OF LOANS*
CURRENT VS PRIOR



TOP 10 LENDERS*		CURRENT 3 MONTHS		PRIOR 3 MONTHS	
COMMERCIAL MORTGAGE LOANS		LOANS	VALUE	LOANS	VALUE
1.	Branch Banking & Trust Company	8	\$91.2 M	3	\$7.1 M
2.	Seacoast National Bank	7	\$17.8 M	5	\$18.5 M
3.	Bank of America NA	6	\$55.6 M	5	\$46.1 M
4.	Wells Fargo Bank National Association	5	\$46.8 M	1	\$4.0 M
5.	Professional Bank	5	\$13.7 M	1	\$2.5 M
6.	Centerstate Bank NA	5	\$10.4 M	5	\$13.0 M
7.	JPMorgan Chase Bank NA	4	\$94.2 M	2	\$6.9 M
8.	Legacy Bank of Florida	4	\$11.4 M	2	\$10.5 M
9.	First Bank of the Palm Beaches	4	\$7.5 M	4	\$10.1 M
10.	Deutsche Bank Trust Company Americas	3	\$813.3 M	0	\$0.0 M

	CURRENT 6 MONTHS		PRIOR 6 MONTHS		CURRENT 12 MONTHS		PRIOR 12 MONTHS	
	LOANS	VALUE	LOANS	VALUE	LOANS	VALUE	LOANS	VALUE
1)	11	\$98.3 M	7	\$78.9 M	18	\$177.2 M	18	\$132.8 M
2)	12	\$36.3 M	2	\$4.9 M	14	\$41.2 M	8	\$25.8 M
3)	11	\$101.7 M	8	\$42.0 M	19	\$143.6 M	23	\$319.6 M
4)	6	\$50.8 M	7	\$96.6 M	13	\$147.4 M	29	\$402.0 M
5)	6	\$16.2 M	6	\$9.0 M	12	\$25.2 M	7	\$31.1 M
6)	10	\$23.4 M	10	\$19.7 M	20	\$43.1 M	19	\$42.7 M
7)	6	\$101.0 M	14	\$86.9 M	20	\$187.9 M	25	\$124.8 M
8)	6	\$21.8 M	2	\$9.6 M	8	\$31.4 M	6	\$12.7 M
9)	8	\$17.6 M	3	\$5.7 M	11	\$23.3 M	8	\$14.0 M
10)	3	\$813.3 M	1	\$600.0 M	4	\$141.3 M	3	\$1504.0 M

*For largest volume of commercial mortgages in Palm Beach County during the last three months

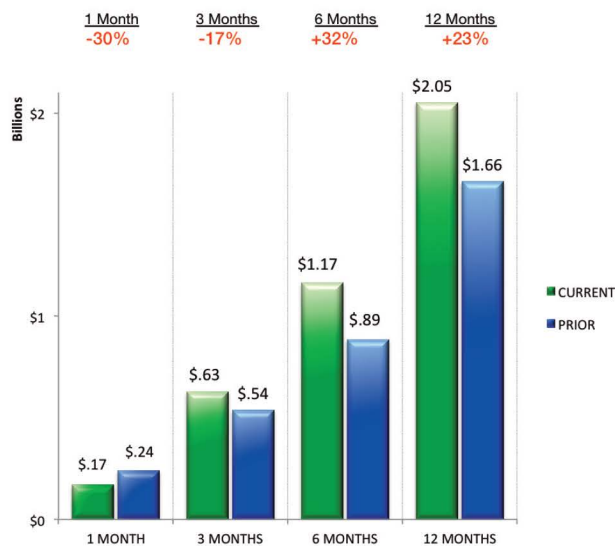
RESIDENTIAL MORTGAGES

TOP 5 RESIDENTIAL LOANS — NOVEMBER

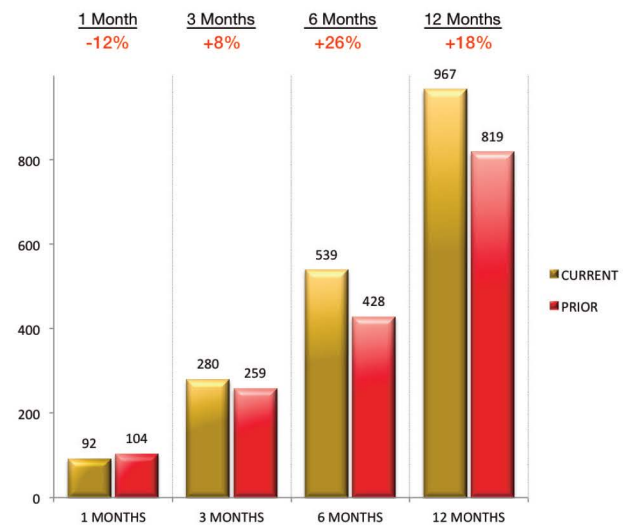
LENDER	AMOUNT	BORROWER
Suntrust Bank	\$10.0 M	Alex Chesterman
Bank of America NA	\$5.0 M	Jared Alexander Roth
UBS Bank USA	\$4.9 M	Robert Berg
First Republic Bank	\$4.9 M	Sean D. Miller
American Advisors Group	\$4.4 M	Ulku Sokmensuer

\$1 MILLION-PLUS RESIDENTIAL MORTGAGES

VALUE OF LOANS*
CURRENT VS PRIOR



NUMBER OF LOANS*
CURRENT VS PRIOR



TOP 10 LENDERS*

RESIDENTIAL MORTGAGE LOANS		CURRENT 3 MONTHS		PRIOR 3 MONTHS	
		LOANS	VALUE	LOANS	VALUE
1.	Bank of America NA	25	\$54.9 M	20	\$37.4 M
2.	First Republic Bank	19	\$70.3 M	16	\$38.7 M
3.	TD Bank NA	14	\$23.6 M	8	\$9.6 M
4.	UBS Bank USA	13	\$28.1 M	9	\$18.6 M
5.	Citibank NA	12	\$49.4 M	6	\$29.9 M
6.	Iberia Bank	11	\$22.9 M	4	\$11.5 M
7.	Suntrust Bank	10	\$24.0 M	5	\$6.5 M
8.	JPMorgan Chase Bank NA	10	\$20.4 M	14	\$30.1 M
9.	Morgan Stanley Private Bank NA	10	\$14.3 M	11	\$17.5 M
10.	Wells Fargo Bank NA	8	\$12.1 M	21	\$45.8 M

	CURRENT 6 MONTHS		PRIOR 6 MONTHS		CURRENT 12 MONTHS		PRIOR 12 MONTHS	
	LOANS	VALUE	LOANS	VALUE	LOANS	VALUE	LOANS	VALUE
1)	45	\$92.9 M	43	\$86.3 M	88	\$178.5 M	86	\$175.3 M
2)	35	\$109.0 M	17	\$36.6 M	52	\$145.6 M	44	\$75.8 M
3)	22	\$33.2 M	12	\$20.6 M	34	\$53.7 M	21	\$30.0 M
4)	22	\$46.7 M	13	\$28.6 M	35	\$75.3 M	15	\$32.5 M
5)	18	\$79.3 M	9	\$22.5 M	27	\$101.8 M	20	\$46.2 M
6)	15	\$34.4 M	13	\$31.4 M	28	\$65.8 M	29	\$60.2 M
7)	15	\$30.5 M	6	\$8.5 M	21	\$39.0 M	7	\$10.0 M
8)	24	\$50.4 M	29	\$87.2 M	53	\$137.6 M	66	\$233.9 M
9)	21	\$31.8 M	18	\$29.5 M	39	\$61.3 M	22	\$35.1 M
10)	29	\$57.9 M	42	\$103.4 M	71	\$161.3 M	52	\$97.6 M

*For largest volume of residential mortgages in Palm Beach County during the last three months

RABIDEAU LAW

PALM BEACH - TORONTO

400 Royal Palm Way, Suite 404
Palm Beach, FL 33480

POSTMASTER STD
U.S. POSTAGE
PAID
WEST PALM BCH, FL
PERMIT NO. 347

Advertisement



Rabideau Law is a trusted representative of high-end real estate, business formation, cross-border and legal consultation. Our law firm has been in existence since 2014 and consists of three attorneys dedicated to providing superior legal counsel and first-class service to our clientele.

Our legal team offers decades of knowledge and experience on all legal matters for successful real estate transactions and related issues. We provide representation for all of your real estate assets, such as single-family homes, condominiums, co-ops, vacant land, investment, and commercial properties.

ONLINE RESOURCES

Beach Access: www.rabideau-law.com/beach-access/

Rabideau Law Million Dollar Mortgage Brief - Palm Beach County: www.rabideau-law.com/million-dollar-mortgage-brief/

CONTACTS

David E. Klein, Esq. | dklein@rabideau-law.com | 561.655.6221

Florida Bar Board Certified in Real Estate Law

Guy Rabideau, Esq. | grabideau@rabideau-law.com | 561.655.6221

Florida Bar Board Certified in Real Estate Law